



CSI COLLEGE OF ENGINEERING, KETTI

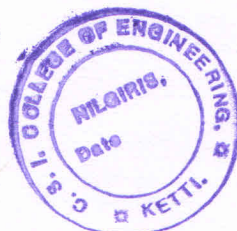


Approved by AICTE, New Delhi (F.No.730-52-301 (E)ET/97 dated NOV. 17, 1997),
Government of Tamil Nadu (vide GO Ms. No. 112, dated 23.3.1998),
Affiliated to Anna University, Chennai (Tamil Nadu Act 26 of 2001 w.e.f.31.12.2001).

7.1.3 - Describe The Facilities In The Institution For The Management Of The Following Types Of Degradable And Non-Degradable Waste (Within 200 Words)

L. Mey Shankar

**PRINCIPAL
CSI COLLEGE OF ENGINEERING
KETTI - 643 218.**





CSI COLLEGE OF ENGINEERING, KETTI



Approved by AICTE, New Delhi (F.No.730-52-301 (E)ET|97 dated NOV. 17, 1997),
Government of Tamil Nadu (vide GO Ms. No. 112, dated 23.3.1998),
Affiliated to Anna University, Chennai (Tamil Nadu Act 26 of 2001 w.e.f.31.12.2001).

Sustainability and environmental management are integral to the institution, with a strong commitment to adopting principles and practices for sustainable development. A key focus is on effective waste management, particularly solid, liquid, and e-waste, as well as hazardous waste. Solid waste is systematically segregated to create plastic-free zones. Plastic bottles and cups are disposed of responsibly in designated containers. Liquid waste, such as runoff water, is naturally filtered and repurposed for gardening, ensuring efficient water management. E-waste management is meticulously carried out on campus by decommissioning outdated electronic devices, including computers, and ensuring their proper disposal after certification. This process guarantees that electronic waste is handled responsibly and handed over to authorized agencies. For hazardous waste, the institution adheres to ethical practices and complies with established norms to minimize risks. Proper procedures are followed to ensure that hazardous materials are safely disposed of, reducing their impact on the environment. Overall, the institution strives to foster a culture of sustainability by implementing practical measures and encouraging responsible waste disposal. These efforts underline its dedication to preserving the environment while promoting sustainable development practices.

Solid waste Management:



R. Mey Shant
PRINCIPAL
CSI COLLEGE OF ENGINEERING
KETTI - 643 215.



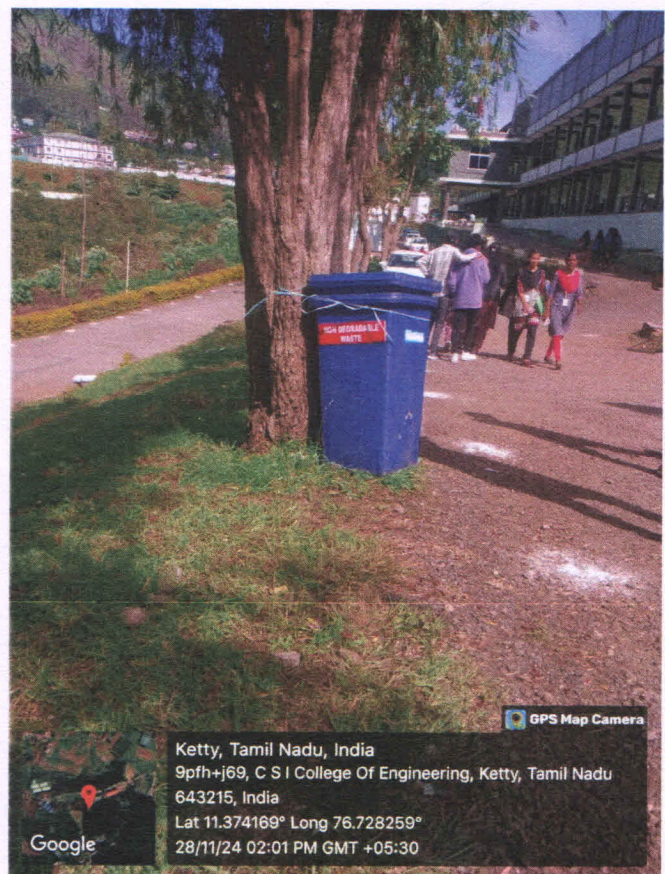
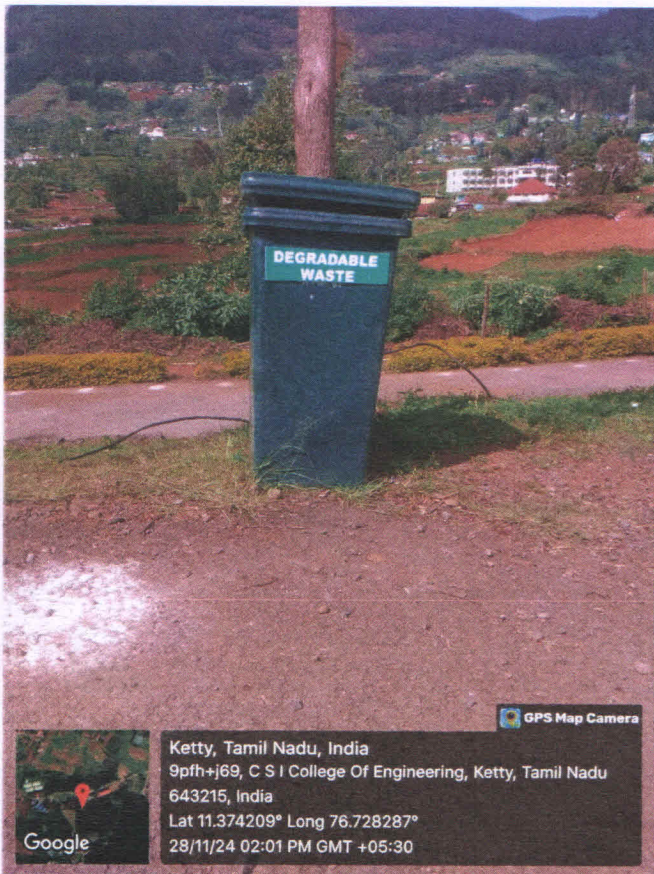
ECE Department



CSI COLLEGE OF ENGINEERING, KETTI



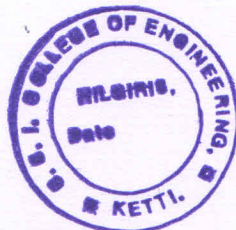
Approved by AICTE, New Delhi (F.No.730-52-301 (E)ET)97 dated NOV. 17, 1997),
Government of Tamil Nadu (vide GO Ms. No. 112, dated 23.3.1998),
Affiliated to Anna University, Chennai (Tamil Nadu Act 26 of 2001 w.e.f.31.12.2001).



Cafeteria

L. May Shande
PRINCIPAL

C.S.I. COLLEGE OF ENGINEERING
KETTI - 643 216





CSI COLLEGE OF ENGINEERING, KETTI



Approved by AICTE, New Delhi (F.No.730-52-301 (E)ET/97 dated NOV. 17, 1997),
Government of Tamil Nadu (vide GO Ms. No. 112, dated 23.3.1998),
Affiliated to Anna University, Chennai (Tamil Nadu Act 26 of 2001 w.e.f.31.12.2001).

Liquid waste Management:



Hostel Mess

R. May Shankar

PRINCIPAL
C.S.I. COLLEGE OF ENGINEERING
KETTI - 643 215,





CSI COLLEGE OF ENGINEERING, KETTI



Approved by AICTE, New Delhi (F.No.730-52-301 (E)ET97 dated NOV. 17, 1997),
Government of Tamil Nadu (vide GO Ms. No, 112, dated 23.3.1998),
Affiliated to Anna University, Chennai (Tamil Nadu Act 26of 2001 w.e.f.31.12.2001).



Boys Hostel

R. May Shank
PRINCIPAL
C.S.I. COLLEGE OF ENGINEERING
KETTI - 643 216.

